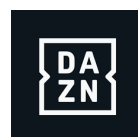


# Manual Flypack 3.0

For:  
DAZN

Document  
Version:  
1.2

Date:  
6-12-2021



# Content

<b>1. How to wire</b>	<b>3</b>
1.1. Power CMU	3
1.2. Power Monitor	3
1.3. Network	3
1.4. Headset	4
1.5. Connecting the Monitor	4
1.6. Connecting external HDMI monitor	4
<b>2. Booting the commentary unit</b>	<b>5</b>
2.1. Power on	5
2.2. Login	5
<b>3. Connection to NEP</b>	<b>6</b>
<b>4. Audio Controls</b>	<b>7</b>
4.1. MUTE and ON Button	7
4.2. Headphone volume control	8
4.3. Headphone signal mix control	8
4.4. Vu-meter indication	9
<b>5. Help</b>	<b>10</b>
5.1. No power	10
5.2. Not online	10
5.3. No communication with CCP through the flypack	10
5.4. No Video	10
5.5. No International Sound	10
<b>6. 4G backup</b>	<b>12</b>

# 1. How to wire

## 1.1. Power CMU

The Flypack is delivered with a power brick that needs to be connected to the power connector on the rear side of the CMU. You need to look for the cable with the label 'CMU VDC IN' And connect it to the port on the back of the CMU. Make sure the metal ring is tightened.






## 1.2. Power Monitor

The monitor needs power too. To power it you need to use the provided USB A – USB C cable and connect it to the screen.

Connect the cable to the port named 'DC IN' Connect the USB A side of the cable to the provided USB charger block.



The monitor shows the following symbols on the screen itself:

-  : Get power from source when this icon is shown
-  : Battery power
-  : Battery is being charged

## 1.3. Network

The CMU needs the internet to receive and send audio and video.

To connect the CMU you need to plug in the ethernet cable to your router and to LAN 1 on the back of the CMU.



## 1.4. Headset

To connect your headset, you need to connect it to the XLR and Jack input located on the front side of the CMU.

You will see a total of 5 XLR inputs and 5 jack inputs

We can only use the first three:

- Input 1 (Mic), Output 1 (headphone) = First commentator
- Input 2 (Mic), Output 2 (headphone) = Second commentator
- Input 3 (Mic), Output 3 (headphone) = Third commentator



---

## 1.5 Connecting the Monitor

To use the monitor of your Flypack, you need to use the DVI OUT – HDMI cable. Look at the back of the CMU for DVI out and connect the DVI to it. Then connect the Micro HDMI to your screen on the port named HDMI.



---

## 1.6 Connecting an external HDMI monitor

To use an external monitor, for example your own television, you need to use this DVI - HDMI cable.

Look at the back of the CMU for DVI out and then connect the DVI to it. Connect the HDMI cable to your own monitor.



## 2. Booting the commentary unit

### 2.1 Power on

To power on the Commentary Unit (CMU), you need to push the “**ON**” button for 3 seconds. It takes about 25 seconds to start the CMU. When the device is booted a login screen will appear.

### 2.2 Login

First select a user: Press the three dots to the right of the white box.

Select user ‘**dazn**’. Do not enter a password.

Then press the ‘**Login**’ button on the touchscreen to login into the CMU.

When you have logged-in the below default home-screen appears:



### 3. Connection to NEP

As soon as the Commentary Unit (CMU) has booted and you have logged in, you need to contact NEP to verify visibility of the CMU in the commentary system. Centralised Commentary Production (CCP) is the department that is controlling the back end of the commentary system and is your first point of contact. If, for any reason, they cannot be reached please contact the NEP Service Operation Center (SOC), which is our 24 hour helpdesk.

NEP CCP: +31 35 760 09 58 (only present around event times)

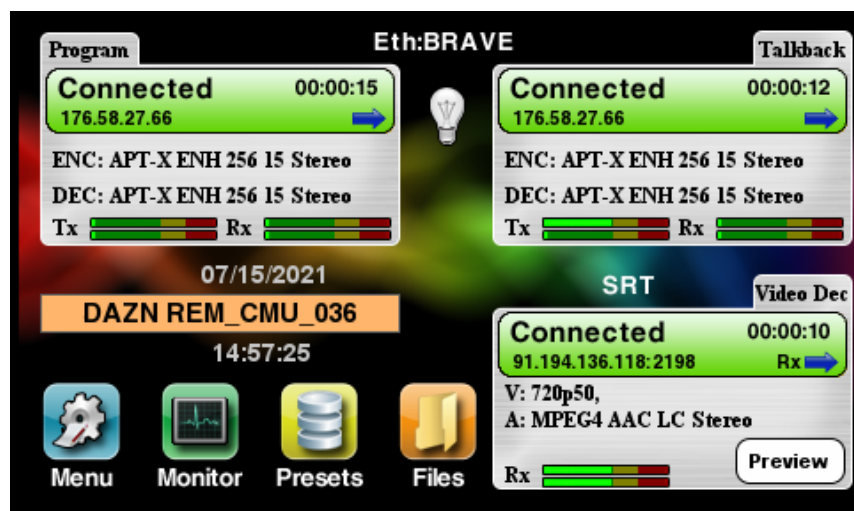
NEP SOC: +31 35 671 46 55 (24/7)

CCP will take control of the CMU as soon as it is online. CCP will take care of dialing in your codecs to NEP.

Please always confirm your images and audio are good quality before your event starts.

This checklist should be the key points to focus on:

- Microphone check - Can CCP hear you if you speak through the headset?
- Talkback check – Can you hear CCP through the headset?
- Video signal - Confirm if the video is stable and has the correct content (CCP will confirm).
- International Sound - Check whether you have international sound on your headset.



All incoming (Rx) and outgoing (Tx) audio lines can be monitored on the homepage after logging in. The VU meters give you the indication if you are sending audio or receiving audio on both codecs.

## 4. Audio Controls



### 4.1. MUTE and ON Button

On the left-hand side there is a single mute button. Pressing this '**MUTE**' button will silence all audio inputs and outputs for the CMU as well as audio on the headphones.

Each input is individually enabled with its '**ON**' button. This needs to be selected for the audio lines to be enabled. If the button lights red it means the microphone is on.

The gain levels of the microphone are remotely controlled by NEP. This is the rotary button labeled as **IN**.



## 4.2. Headphone volume control

Above the **ON** button you find the headphone control knobs. The required headset HP button needs to be pressed/turned to activate the controls.

A green light next to the HP dial lights up to signify which headset is being controlled.

Any headphone gain change gets a pop-up with the dB indication on the display screen.

**Changes here only affect the headphone mix (in your ears) and not the Program output.**



## 4.3 Headphone signal mix control

On the right hand side there are 6 knobs/dials labeled HP Matrix 1-6.

These knobs become active when the appropriate HP dial has been pressed/turned and the green light next to it is on.

Once activated, these give access to the Headphone Signal mix for the headset.

Each signal might be enhanced or dimmed, trimming the knobs.

Furthermore, pressing the HP Matrix knob once mutes the signal component immediately for this headphone, this will show as red on the display panel.

**Changes here only affect the headphone mix (in your ears) and not the Program output**

The numbers below reflect what is adjusted by each knob.

1. Mic 1
2. Mic 2
3. Mic 3
4. TbRx (CCP+TX)
5. AV / AV2
6. AV / AV2

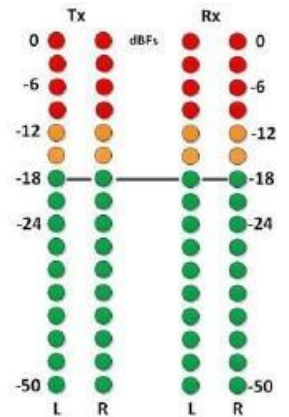
AV = World feed + International Sound  
AV2= Clean International Sound



## 4.4 Vu-meter indication

Instant Vu-meter indication is provided on four vertical LED Bars.  
Green means the input signal matches the proper dynamic range (from -50 to -18 dBFs).  
When the signal goes past -18dBFs the lights turn orange.  
From -12 to 0 dBFs the lights turn red.

The two LED bars on the left monitor the audio for the program audio input mix.  
The two bars on the right monitor the audio channel of the incoming PROGRAM stream.



# 5. Help

## 5.1 No power

- Check if the CMU has a green light around the on button of the CMU.
- No video on your screen: check if you connected the charger to the screen.

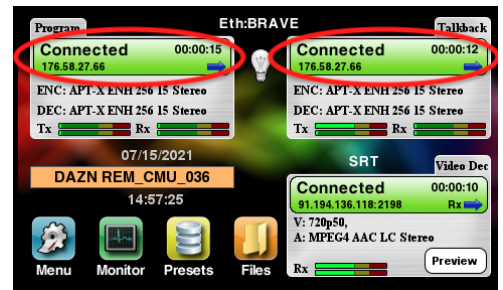
## 5.2 Not online

- Check if you connected the ethernet cable correctly on the back of the CMU and if the lights around the port are lit up. If yes, you connected it the correct way.
- Check on the router if the port where you plugged your cable in has blinking lights. If yes, you have connected it the correct way.

## 5.3 No communication with CCP through the flypack

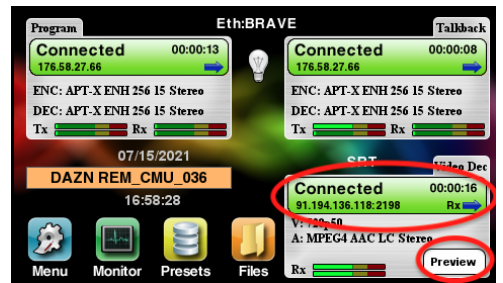
- Check on the HP mix if the TbRx is open in your headphone mix.
- Check if the Program and talkback codecs are still connected and green (see screenshot).

If not contact NEP by phone:  
1<sup>st</sup> NEP CCP: +31 35 760 09 58  
2<sup>nd</sup> NEP SOC: +31 671 46 55



## 5.4 No Video

- Check if the monitor is turned on.
- Check if the monitor has the power cable connected.
- Check if the video decoder is connected and green (see screenshot).
- Check if you see any video if you press 'Preview' on your CMU screen (see screenshot).
- If the video decoder states idle and looks grey, please contact CCP over talkback/phone.



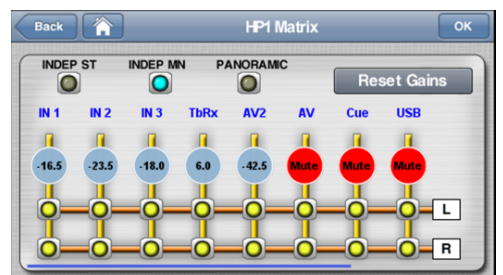
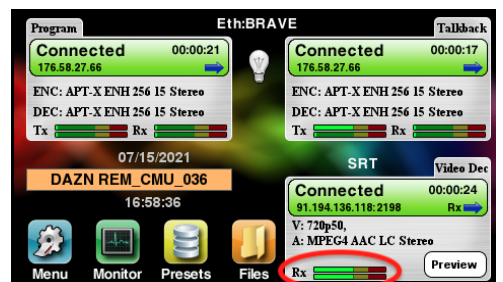
## 5.5 No International Sound

- Check if you have audio on the video codec (see screenshot).
- Check your HP mix.

To check your HP mix.

1. Press the HP button and the green light next to it lights up.
2. You see a pop-up window on the CMU screen.
3. Make sure AV2 (or if you want the full mix AV) is not muted and increase/decrease if needed.

If the help section didn't resolve the issue please contact us by phone:  
1<sup>st</sup> NEP CCP: +31 35 760 09 58  
2<sup>nd</sup> NEP SOC: +31 671 46 55



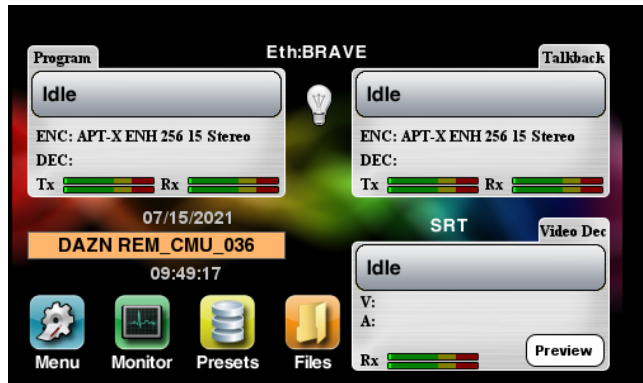
## 6. 4G backup

Your flypack is equipped with 4G functionality. In case of losing the cabled internet connection, we can switch to a 4G mobile connection.

Please follow the following steps to setup 4G only in case NEP requests you to do this.

If in any case the CMU forgot the SIM pin code it is: 0000

- Make sure all codecs are disconnected



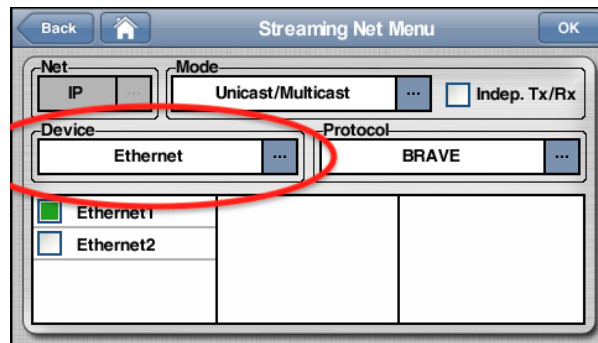
- Go to Menu and click on 'Streaming'



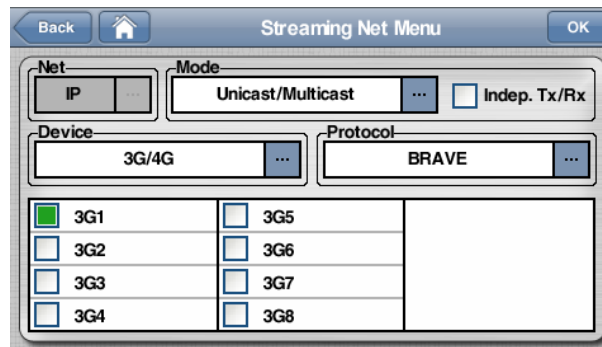
- Click on 'Net'



- Click on 'Device'



- Click on '3G/4G' and hit OK



- Contact CCP to connect you to the commentary system:

1st NEP CCP: +31 35 760 09 58

2nd NEP SOC: +31 671 46 55